



# The Voter

League of Women Voters of Columbia/Boone County

VOLUME 74, NO. 8

AUGUST, 2009

## Suffragists Film a Box Office Smash!

It would have been Standing Room Only at the Ragtag Cinema on Sunday, July 19th for the showing of Iron Jawed Angels, co-sponsored by the League of Women Voters, AAUW and Tuesday Club (General Federation of Women's Clubs). However, fire laws wouldn't allow that, so some brave souls chose to hunker down in front of the first row in the little theater.

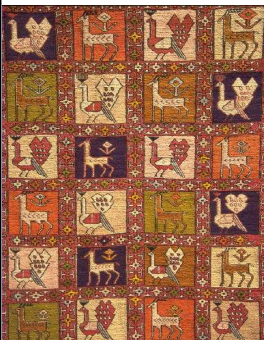
This film recounts a key chapter in U.S. history: the struggle of suffragists who fought for the passage of the 19th Amendment. Focusing on two young, defiant women, Alice Paul and Lucy Burns, the film shows how these activists broke from the mainstream women's rights movement, led by Carrie Chapman Catt, founder of LWV, to create a more radical wing, daring to push the boundaries of political protest to secure women's voting rights in 1920.

Over 200 protesting women were jailed, among them, the wife of a U.S. Senator. After some time, the frivolous charge of obstructing traffic was dropped and they were released. The 19th Amendment was ratified by one vote, that of 24 year old Harry Burns of Tennessee who switched his vote at the last minute. His mother had sent him a letter urging him to "be a good boy" and "vote for suffrage".

We have many people to thank for the women's right to vote. The women's rights convention in Seneca Falls, NY in 1848, 72 years prior to ratification, is considered to be the beginning of an organized effort toward Amendment XIX of the United States Constitution which reads: "The right of citizens of the United States to vote shall not be denied or abridged by the United State or by any State on account of sex. Congress shall have power to enforce this article by appropriate legislation."

Joni O'Connor (with thanks to Chair, Holly Burgess and LWV members Elaine Blodgett, Rachel Brekhuis and Barbara Kopta

## Quilting?



Yes, quilting! In support of that state League's 90th anniversary next year (the national's 100th in another decade), LWVMO will be raffling one quilt at our 90th birthday celebration next April and a second, different quilt at the national convention in June. Each quilt will be composed of blocks featuring women significant in winning the right to vote and in our history.

The Columbia-Boone County League will be represented in both quilts, thanks to the efforts by local resident and ace quilter, Margie Hicks.

Local League members will be selling raffle tickets in the coming months. This will be an opportunity for a chance to get a wonderful gift for yourself or someone else.

## UPCOMING EVENTS OF INTEREST

- *Energy Matters*, Tues., Aug. 4, Library, 1 pm,
- *Board Mtg., Boone Electric*, Mon. Aug. 10, 6:30 pm
- *Civil Liberties Com., Thurs.*, Aug. 13, Library, 1:15 pm
- *Women's Equality Day, August 26 (the date the 19th Amendment was ratified in 1920.)*



- *Fall Picnic*, Tues., Sept. 8, 11:30-1:00 Bethel Park
- *Civil Liberties Comm.*, Thurs., Sept. 10, Library, 1:15 pm
- *Board Mtg., Boone Electric*, Mon. Sept. 14, 6:30 pm
- *"Is Privacy a Right?" Constitution Day Celebration, Top of the Tiger*, Thurs., Sept. 17, 7:15 pm
- *Energy Matters Tues.*, Sept. 22, Library, 1 pm
- *Unit/Discussion Mtg., on 'Mental Health First Aid,'* Wed., Sept. 23, 7 pm, County Govern. Center, Chambers
- *Unit/Discussion Mtg., on Mental Health First Aid,* Thurs., Sept. 23, 12:00 noon, location tba

## A Successful July!



It was interesting, intense, quiet and for some people-downright uncomfortable and dark. We can thank new board member Holly Burgess for the whole thing.

Holly suggested showing **Iron Jawed Angels** only about a month and a half ago and was able to plan an evening at RagTag theatre for us and two other groups - The Tuesday Club and AAUW. League did PR, Tuesday Club did the posters and Holly (also an AAUW member) did the planning.

Members and many people who weren't in any of the organizations came to watch the movie about the early suffragists and their achievement of the women's right to vote, the 19th amendment. So many people showed up in fact, that many of those who worked on the promotion and greeted attendees had to take a seat on the floor, in front, lying down staring up at the screen. We guess that with seating at 72 and about 15 extra people on the floor we did well. All those attending enjoyed being there.

What I most found fascinating in the film was the fact that the founder of the League, Carrie Chapman Catt, had worked on woman's suffrage for years, achieving political influence within the governmental system, including then President Woodrow Wilson. As often happens, a younger group formed, led by Alice Paul. They hit the streets to battle and march for the vote. While both groups wanted the same goal, they disagreed on the tactics and sometimes fought with each other or went after the same donors. In the end, it took both of these groups and many men and women to get the 19th amendment passed in 1920.

But what an event! The topic itself, the women's groups of which League is the youngest to be formed, were happy and proud to look back at what many of our former members took on so long ago. There was a certain intensity of feeling after watching the movie, realizing what many of those women went through to achieve what to us seems like such a simple, reasonable right.

We all look forward to working with each other when a special issue of interest arises and we celebrate all the work everyone in the organizations has done over these many years.

**And, in case you missed it:** we had two discussion groups on taxes. One led by Cande Iveson met at Panera's and talked about the proposal in Missouri to replace the current income tax with a state sales tax, as well as health matters. The second group was led by Linda Kaiser and me and met at the library to also discuss the proposed tax issue and strategies for educating the public on the issues.

This all happened in July, known to be a 'slow, and usually hot' month in the summer. But, I guess, when it comes to politics and discussions, there never is a bad time to talk. And this July, we out did ourselves.

Enjoy the rest of the summer and we'll see you in September 8 at the picnic along with special visitor, Lois Detrick, LWVMO state president.

Elaine Blodgett

## LWVUS Updates

LWVUS program planning materials will be sent out in early fall 2009 to state and local Leagues. Program – governmental issues that League members choose for concerted study and action – is a core part of our mission. It is important for every League to hold a Program Planning meeting. The deadline for receipt of program planning forms at the LWVUS is March 1, 2010. (Note: Our unit/discussion meetings are scheduled for Wednesday, January 27 and Thursday, January 28. Check the Voter for more information as to time and place.)



## Taxes and Growth

In a rapidly changing world of taxes, some of us are not always sure of what is really being discussed. Following are some definitions that you may find helpful.

- **Circuit Breakers:** Devises to help alleviate the burden of property taxes. (E.g., Senior citizens or other residents whose incomes are below a certain amount get income tax refunds when the property taxes paid exceed a certain percentage of income.)
- **Flat Tax:** The flat tax was first proposed by two Stanford economists, Robert Hall and Alvin Rabushka, in their 1983 book, "Low Tax, Simple Tax, Flat Tax." The plan would replace the current personal and corporate income tax structure with a two-level tax designed to tax all income exactly once and at the same rate.
- **Transportation Development District (TDD):** A special taxing district which is a quasi-governmental entity. It issues bonds pledged by an add-on sales tax of up to 1% collected by retailers within the district. Bond proceeds are used to fund road improvement projects connected with the developments and the additional sales tax is used to repay the bonds. The proposed tax district must be approved in a court. Once the court has approved the TDD, the district deals with the road improvement contractors or, in many cases, works in cooperation with the Missouri Department of Transportation directly and the city or county is not involved.
- **Tax Increment Financing (TIF):** A borrowing method. The basic idea underlying TIF is that a city or town finances an improvement in a specific district with the property tax revenue generated by that improvement. The part of the new stream of money increase due to resulting higher property values, the tax increment, get paid into a special fund used to subsidize some portion of the redevelopment in the TIF district. It was originally intended to help blighted areas win a municipality to redevelop.

What is LWVMO 's position on taxes? "The League supports an adequate, balance and progressive tax system to finance necessary governmental services, which emphasizes equity and the fair sharing of the tax burden. The tax base should be broad with few exceptions and the tax mix should clearly reflect a combination of ability to pay and benefits received. Financial stability should be an important goal of fiscal policy." Within this general position are more specific statements. Some of these are...

- The rate and bracket structure of individual income tax should be made more progressive and increased above the current \$9,000 maximum. Current income taxes are fairly flat due to bracket structure.
- Food and drugs should be exempt from sales tax. Support for exempting food and drugs using income tax credits or rebates paid on food are ways to reduce the regressive nature of the state income tax.
- League opposes taxes services.

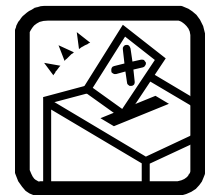
For more information about LWVMO positions on fiscal policy and other areas, see the Guide to State Action 2009-2010 on the website. Currently, only the two page, "Positions in Brief" is on the site, but the full guide should be there in the near futures. [Www.lwvmissouri.org](http://www.lwvmissouri.org).

## LWVMO Study

At the May convention, LWVMO delegates approved a proposal for a statewide study on early voting by the Kansas City/Jackson/Clay/Platte league. Donna Hoch and Cheryl Barnes agreed to chair the study committee.

Information from the state study committee will be available shortly to local leagues. The tentative reporting date to the state board is currently January 1, 2010.

Although some information will appear in our *Voter*, look for announcements about the study group meetings (likely in October) as well as information on our website.

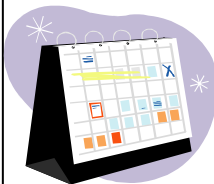


## Short Items of Interest

**Correction:** Kathryn Allen was inadvertently omitted from the list of underwriters for our June play fundraiser. Sorry and thanks again to Kathryn and the others who so generously underwrote our annual fundraiser.

**Fall Picnic:** Get ready to start off the Fall on September 8 from 11:30 am to 1:30 PM. Join us and find out what will be happening in the next year.

**National Census:** The census will take place in 2010. LWVUS is taking an active role in this effort, and encouraging state and local leagues to do so as well. Among other things, the results will impact legislative apportionment.



**Calendars:** League calendars for 2010 are now available. at the same \$5.00 price. Although they will be available for purchase at the fall picnic and other programs, you can reserve your copy now by contacting Liz Schmidt via email at [lizschmidt@centurytel.net](mailto:lizschmidt@centurytel.net) or telephone at 445-0655.

**League Presents:** The program this month will feature two women who are lobbyists in Jefferson City. Their topic will be how citizens can individually lobby their Senators and Representatives. As the program is taped late in the month, look for it on CAT3TV in September. (Check the schedule at [www.cat3.tv](http://www.cat3.tv). It appears on Mediacom channel 85.)

## Global Climate Change: Impacts in the Midwest

The climate of the Midwestern states is already changing. Annual average temperatures have risen in recent decades, with the largest increases in the winter months. Extreme heat events are occurring more frequently, and heavy downpours are becoming much more common as well. The duration of lake ice, including on the Great Lakes, is decreasing, and the growing season is starting earlier and lasting longer.

These trends are expected to continue, although the extent of the changes that do occur will depend on whether emissions of heat-trapping gases are cut substantially or continue to rise at close to their current pace. By the end of the century, under a business-as-usual emissions scenario, an Illinois summer could feel like one in east Texas today. And a Michigan summer may feel like an Arkansas summer does now.

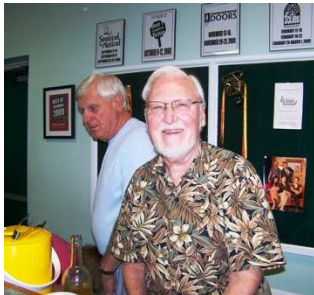
The following specific impacts of climate change are among those projected for the eight states in the Midwest—Illinois, Indiana, Iowa, Missouri, Michigan, Minnesota, Ohio, and Wisconsin:

- Increasingly frequent and more intense heat waves will adversely affect human health.
- More frequent heavy rainstorms will cause flooding and trigger sewage overflows.
- Increases in heat, insect pests, and weather extremes will pose challenges for agriculture.
- Great Lakes water levels will decline, increasing shipping costs and dredging requirements.
- Changing climate conditions will threaten many native species.

These are the opening paragraphs on the League's new fact sheet. It was written by Eleanor Revelle, Climate Change Task Force Member, and published on the League's website on June 23, 2009. Go the to website to read the entire three-page article ([www.lwv.org](http://www.lwv.org)).

## “My Fair Lady” Fundraiser

As usual, members and friends of the League turned out for “My Fair Lady,” put on by the Columbia Entertainment Company. Some of the attendees captured on film are shown below.



Thanks to all who came and enjoyed the play!

## Membership

When you look at the membership label on your bulletin, if you have a (9) after your name, you are paid for this year. If there is no number or some other numeral, you are welcome to bring your membership up to date. If you wish to receive a membership list or you feel we have made a mistake in your status, please contact Liz Schmidt at [lizschmidt@centurytel.net](mailto:lizschmidt@centurytel.net) or call 445-0655.

**Dues** are payable now for 2009 and are \$50 for individuals, \$80 for a household and \$15 for local students. Fill in the information below and mail it, with your check, to Membership Chair, League of Women Voters, PO Box 239, Columbia, MO 65205.

Name \_\_\_\_\_ Email Address \_\_\_\_\_  
 Street \_\_\_\_\_ City \_\_\_\_\_ State \_\_\_\_\_ Zip Code \_\_\_\_\_  
 Telephone \_\_\_\_\_

(Note: Tax deductible donations to the Education Fund should be a separate check, payable to LWVEF-MO704) **For more information, contact Liz Schmidt at 445-0655 or Linda Brown at 447-3939.**

**LEAGUE OF WOMEN VOTERS**

**Columbia – Boone County MO**  
 P.O. Box 239  
 Columbia, MO 65205  
<http://lwv.columbia.missouri.org>

**NON PROFIT ORG.**  
**U.S. POSTAGE**  
**PAID**  
**COLUMBIA, MO 65201**  
**Permit No. 122**

*LWV: Where hands-on work to safeguard  
 democracy leads to civic improvement.*

- President:** Elaine Blodgett
- 1<sup>st</sup> Vice President:** Rachel Brekhuis
- 2<sup>nd</sup> Vice President:** Joni O'Connor
- Secretary:** Linda Kaiser
- Treasurer:** David Sapp
- Civil Liberties:** Bertrice Bartlett & Linda Kaiser
- Energy Matters:** Win Colwill & Dick Parker
- Mental Health:** Lael Von Holt
- Membership:** Linda Lenau Brown & Liz Schmidt
- Voter Service:** Carol Schreiber
- Communications:** Maydell Senn
- Hospitality:** Pam Springsteel
- Fundraising:** Barbara Kopta
- Nominating:** Carolyn Leuthold & Sarah Wolcott

**RETURN SERVICE REQUESTED**

<b>August 2009</b>						
Sunday	Monday	Tuesday	Wednesday	Thursday	Friday	Saturday
						1
2	3 Paul Pepper Show at 11 am	4	5	6	7	8
9	10 Board Mtg., Boone Elec. Coop., 6:30 pm	11	12	13 Civil Liberties, 1:15 pm, Library	14	15
16	17	18	19	20 Women's Equal- ity Day	21	22
23	24	25 Energy Matters Committee., Li- brary, 1 pm  CAT3TV taping, Stephens, 6:30 pm	26	27	28	29
30	31					